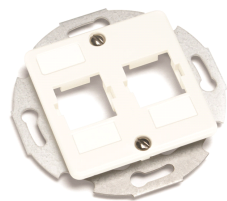


Flush Mount Modular Faceplate, 2 port, white



Product Classification

Portfolio	CommScope®
Product Type	Faceplate kit
Regional Availability	Asia   Australia/New Zealand   EMEA   Latin America   North America

General Specifications

Color	White
Mount Type	Flush
Total Ports, quantity	2
Application	Compatible with U/UTP applications   Used with two M Series modular information outlets
Package Quantity	1

Dimensions

Depth	5.59 mm   0.22 in
Height	50.01 mm   1.97 in
Width	50.01 mm   1.97 in
Weight	0.02 kg   0.04 lb

Mechanical Specifications

Material Type	High-impact, flame retardant, thermoplastic
---------------	---

Environmental Specifications

Flammability Rating	UL 94 V-0
---------------------	-----------

Regulatory Compliance/Certifications

Agency	Classification
ISO 9001:2015	Designed, manufactured and/or distributed under this quality management system

